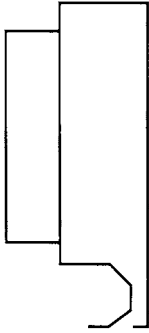


Airguide Model AJ is a high capacity vane diffuser capable of handling a high volume of air with exceptional performance characteristics. The product is particularly well suited for variable air volume applications. All exposed surfaces are painted white. The unit is entirely of coated 24 gauge steel and may be specified as insulated (external or internal) or

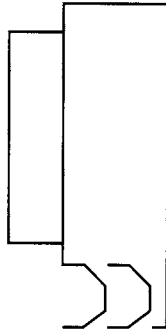
non-insulated. The lengthwise flange may be used as a tile support while the end flange rests on the T-bar. The model AJ is available in lengths from 24"-60" Supply and return models available for narrow T-bar applications. Ceiling manufacturer and T-bar width must be specified for T-bar widths other than 3/4". Refer to page LD-24 for additional T-bar information.

Design Options for Supply Models

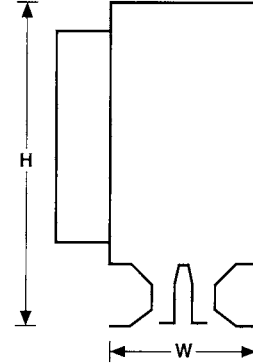
AJ-11
1 Slot - 1 Way



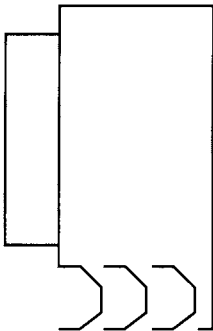
AJ-21
2 Slot - 1 Way



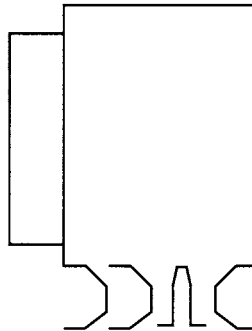
AJ-22
2 Slot - 2 Way



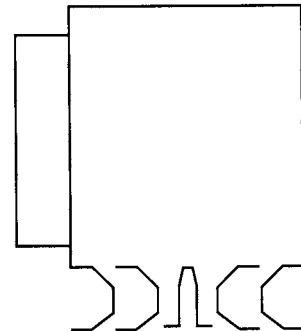
AJ-31
3 Slot - 1 Way



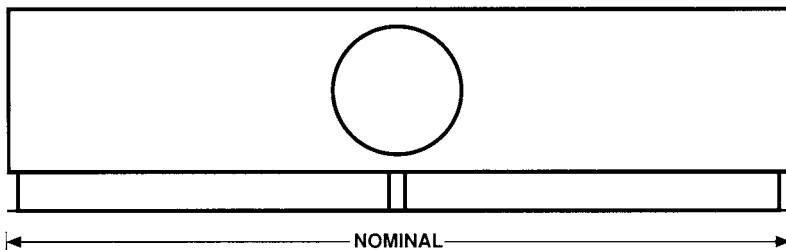
AJ-32
3 Slot - 2 Way



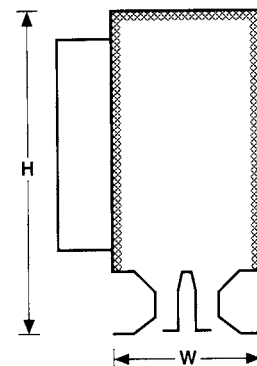
AJ-42
4 Slot - 2 Way



Nominal grid size less 1"
*available with notched center for 48" units



Optional Insulation



	WIDTH	HEIGHT
AJ & AJR 11	1 ¹³ / ₁₆	5, 6" Diameter - 9 ¹ / ₄ "
21	3 ¹ / ₁₆	7, 8 & 9" Diameter - 12 ⁷ / ₁₆ "
22	4 ¹ / ₈	10" Diameter - 14"
31	4 ⁵ / ₁₆	
32	5 ³ / ₈	
42	6 ³ / ₈	