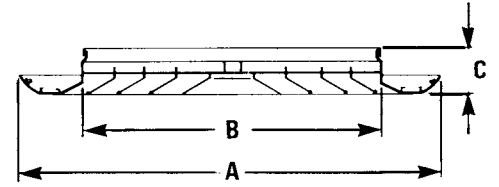


# Model JS Square Ceiling Diffuser



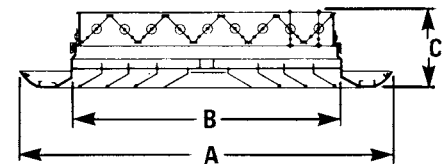
CFM	Ac	DIFFUSER SIZE							
		.21 6" x 6"	.38 8" x 8"	.59 10" x 10"	.86 12" x 12"	1.16 14" x 14"	1.92 18" x 18"	2.88 22" x 22"	3.42 24" x 24"
50	Pressure Loss Throw In Feet Neck Velocity	.007 2.1 200							
75	Pressure Loss Throw In Feet Neck Velocity	.015 3.2 300	.005 2.3 168						
100	Pressure Loss Throw In Feet Neck Velocity	.027 4.2 400	.009 3.1 225						
125	Pressure Loss Throw In Feet Neck Velocity	.041 5.3 500	.014 3.8 281						
150	Pressure Loss Throw In Feet Neck Velocity	.058 6.4 600	.020 4.6 337	.008 3.6 216					
175	Pressure Loss Throw In Feet Neck Velocity	.080 7.5 700	.026 5.4 393	.011 4.2 252					
200	Pressure Loss Throw In Feet Neck Velocity	.104 8.6 800	.034 6.2 450	.014 4.8 288	.007 3.9 200				
250	Pressure Loss Throw In Feet Neck Velocity	.158 10.8 1000	.053 7.8 582	.022 6.0 360	.011 5.0 250	.006 4.1 183			
300	Pressure Loss Throw In Feet Neck Velocity	.225 13.0 1200	.075 9.3 675	.031 7.3 432	.015 6.0 300	.009 5.0 221			
350	Pressure Loss Throw In Feet Neck Velocity		.100 11.0 787	.042 8.5 504	.020 7.0 350	.012 5.8 257			
400	Pressure Loss Throw In Feet Neck Velocity		.130 12.5 900	.054 9.8 576	.026 8.0 400	.015 6.6 294			
450	Pressure Loss Throw In Feet Neck Velocity		.165 14.0 1012	.068 11.0 648	.032 9.0 450	.019 7.5 330			
500	Pressure Loss Throw In Feet Neck Velocity			.083 12.3 720	.040 10.0 500	.023 8.3 368	.009 6.3 223		
600	Pressure Loss Throw In Feet Neck Velocity			.117 14.7 864	.057 12.2 600	.033 10.0 440	.013 7.6 266		
700	Pressure Loss Throw In Feet Neck Velocity			.157 17.3 1008	.078 14.2 700	.044 11.7 515	.017 8.7 311	.008 7.0 208	
800	Pressure Loss Throw In Feet Neck Velocity				.100 16.2 800	.058 13.5 587	.022 10.0 355	.010 8.0 239	.008 7.3 200
900	Pressure Loss Throw In Feet Neck Velocity				.126 18.4 900	.072 15.2 661	.028 11.3 400	.013 9.0 267	.010 8.3 225
1000	Pressure Loss Throw In Feet Neck Velocity				.154 20.3 1000	.088 16.8 734	.034 12.6 444	.016 10.0 297	.012 9.3 250
1200	Pressure Loss Throw In Feet Neck Velocity						.049 15.2 533	.023 12.2 357	.016 11.0 300
1400	Pressure Loss Throw In Feet Neck Velocity						.065 17.7 623	.031 14.2 416	.023 13.0 350
1600	Pressure Loss Throw In Feet Neck Velocity						.085 20.3 711	.040 16.3 476	.029 14.7 400
1800	Pressure Loss Throw In Feet Neck Velocity						.106 24.0 800	.050 18.3 535	.036 16.6 450
2000	Pressure Loss Throw In Feet Neck Velocity							.062 20.5 595	.044 18.6 500
2200	Pressure Loss Throw In Feet Neck Velocity							.074 22.5 654	.053 20.4 550



JS

DUCT SIZE	A	B	C
6" x 6"	9-1/2"	5-9/16"	1-7/16"
8" x 8"	11-1/2"	7-9/16"	1-7/16"
10" x 10"	13-1/2"	9-9/16"	1-7/16"
12" x 12"	15-1/2"	11-9/16"	1-7/16"
14" x 14"	17-1/2"	13-9/16"	1-7/16"

(Same 2" increments up to 24" x 24")



JS-OB

DUCT SIZE	A	B	C
6" x 6"	9-1/2"	5-9/16"	2-13/16"
8" x 8"	11-1/2"	7-9/16"	2-13/16"
10" x 10"	13-1/2"	9-9/16"	2-13/16"
12" x 12"	15-1/2"	11-9/16"	2-13/16"
14" x 14"	17-1/2"	13-9/16"	2-13/16"

(Same 2" increments up to 24" x 24")

The Pressure Loss of the Diffuser is Total Pressure (Static Plus Velocity), In. W.G. Throw is based on terminal velocity of 50 ft. per min., measured from diffuser center. The actual maximum velocity measured at the face will be somewhat greater.